

- Slip torque screwdrivers.
- Tournevis dynamométrique à débrayage.
- Drehmomentschrauber mit Auslösung.
- Atornilladorres dinamométrico corredizos.
- Aparafusadoras dinamométricas com embraiagem de segurança.
- Momentschroevendraaier met slipmechanisme.

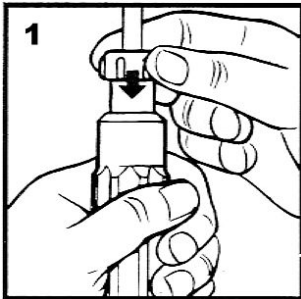
**582F0** ¼" 5 ÷40 cNm + 892/3

**582F1** ¼" 20 ÷120 cNm + 892/3

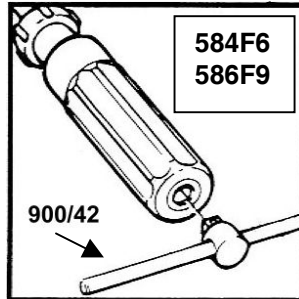
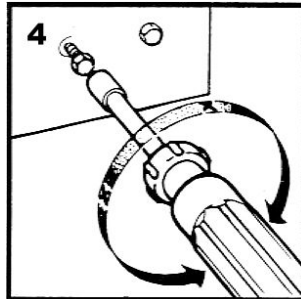
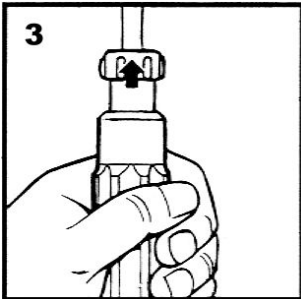
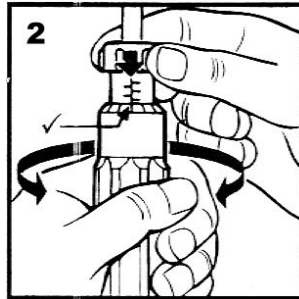


**584F6** ¼" 1 ÷6 Nm + 892/3 + 900/42

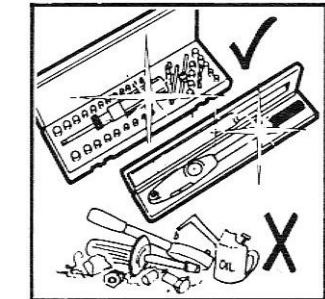
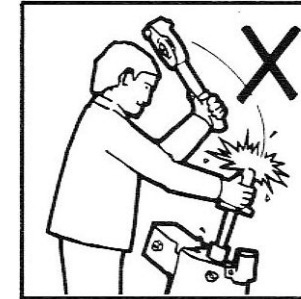
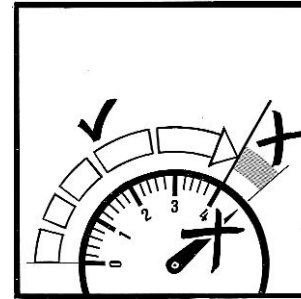
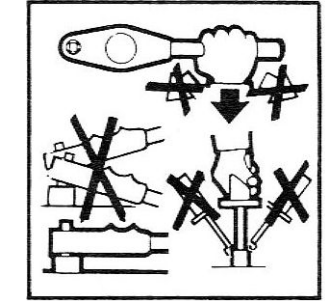
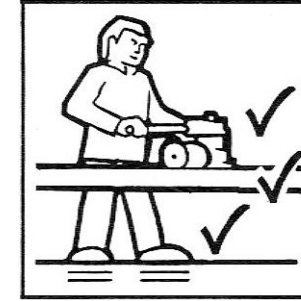
**584F9** ¼" 4 ÷9 Nm + 892/3 + 900/42



- √= COPPIA DI TARATURA RICHIESTA
- √= REQUIRED TORQUE SETTING
- √= VALEUR DU COUPLE SOUHAITEE
- √= GEWÜNSCHTE DREHMOMENT-EINSTELLUNG
- √= AJUSTE DEL PAR REQUERIDO
- √= MOMENTINSTÄLLNING
- √= VOORGESCHREVEN MOMENTINSTELLING



ISTRUZIONI  
 GENERAL INSTRUCTIONS  
 INSTRUCTIONS GENERALES  
 ALLGEMEINE ANWEISUNGEN  
 INSTRUCCIONES GENERALES  
 ALLMANNA INSTRUKTIONER  
 ALGEMENE INSTRUCTIE



**BETA UTENSILI S.p.A.**  
 20050 Sovico (Milano) Italy – Via Alessandro Volta, 18  
 Tel. +39 039 2077.1 – Fax +39 039 2010742  
[www.beta-tools.com](http://www.beta-tools.com) - e-mail: info@beta-tools.it

- Slip torque screwdrivers.
- Tournevis dynamométrique à débrayage.
- Drehmomentschrauber mit Auslösung.
- Atornilladorres dinamoétrico corredizos.
- Aparafusadoras dinamoétricas com embraiagem de segurança.
- Momentschroevendraaier met slipmechanisme.

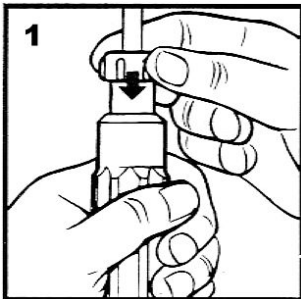
**582F0** ¼" 5 ÷ 40 cNm + 892/3

**582F1** ¼" 20 ÷ 120 cNm + 892/3

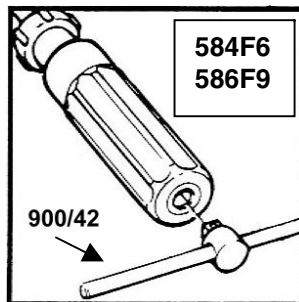
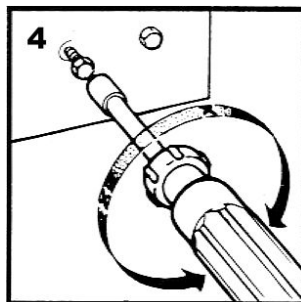
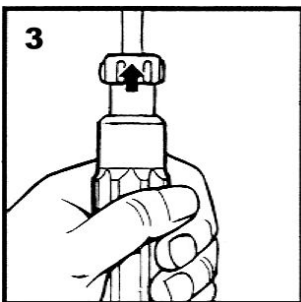
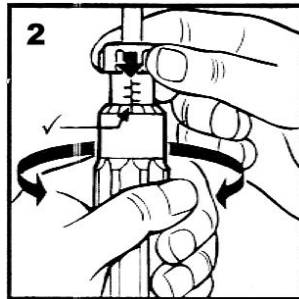


**584F6** ¼" 1 ÷ 6 Nm + 892/3 + 900/42

**586F9** ¼" 4 ÷ 9 Nm + 892/3 + 900/42

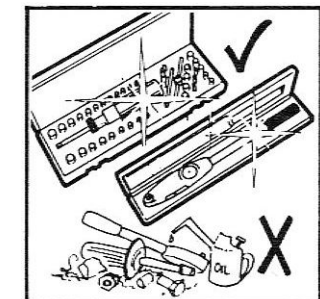
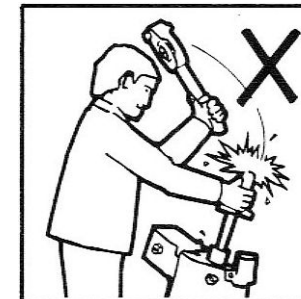
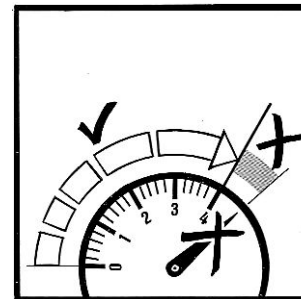
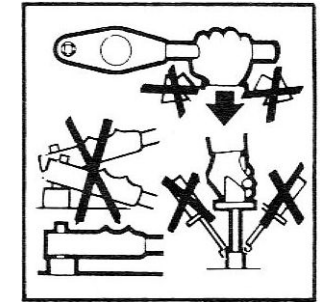
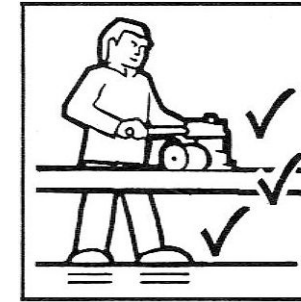


- 1
- √ = COPPIA DI TARATURA RICHIESTA
  - √ = REQUIRED TORQUE SETTING
  - √ = VALEUR DU COUPLE SOUHAITEE
  - √ = GEWÜNSCHTE DREHMOMENT-EINSTELLUNG
  - √ = AJUSTE DEL PAR REQUERIDO
  - √ = MOMENTINSTÄLLNING
  - √ = VOORGESCHREVEN MOMENTINSTELLING



## ISTRUZIONI

GENERAL INSTRUCTIONS  
INSTRUCTIONS GENERALES  
ALLGEMEINE ANWEISUNGEN  
INSTRUCCIONES GENERALES  
ALLMANNA INSTRUKTIONER  
ALGEMENE INSTRUCTIE



**BETA UTENSILI S.p.A.**

20050 Sovico (Milano) Italy – Via Alessandro Volta, 18

Tel. +39 039 2077.1 – Fax +39 039 2010742

[www.beta-tools.com](http://www.beta-tools.com) - e-mail: [info@beta-tools.it](mailto:info@beta-tools.it)

892/3



900/42

